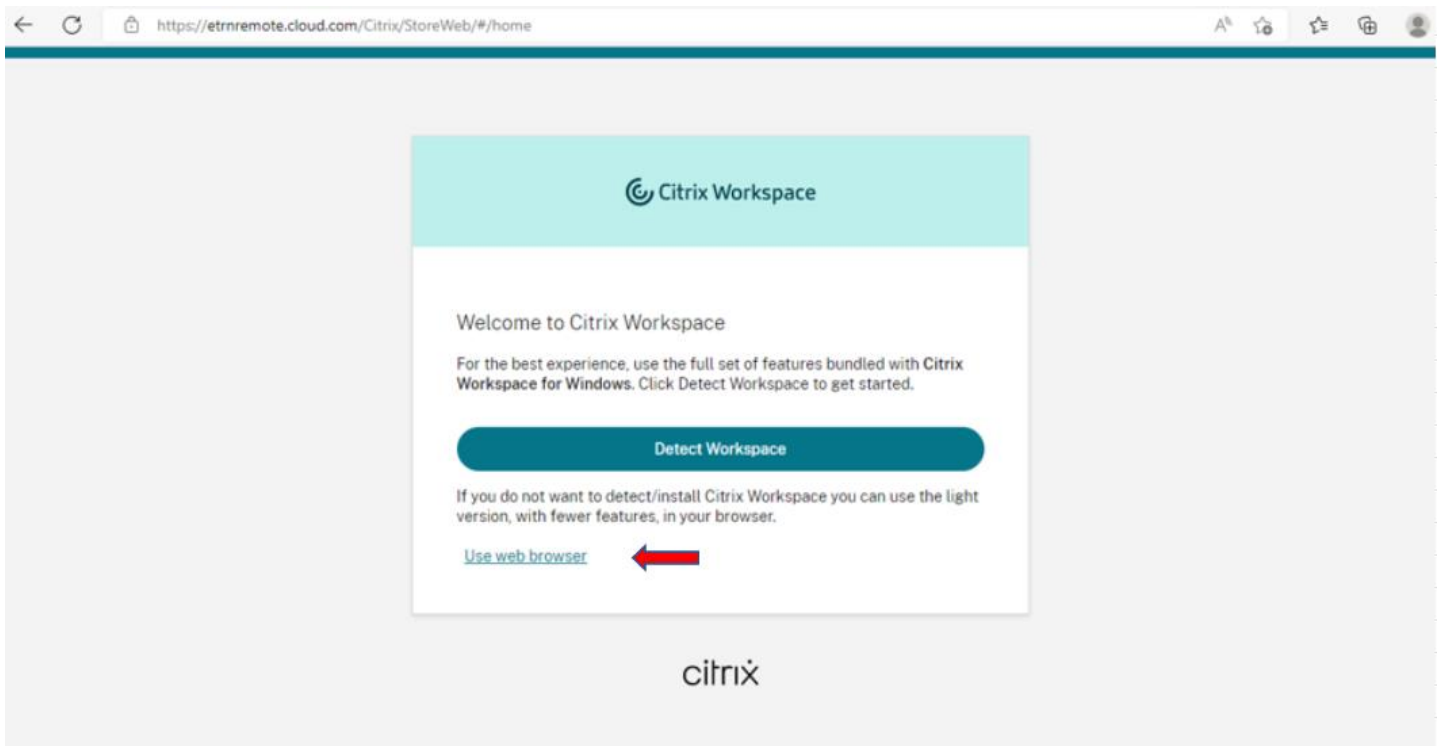
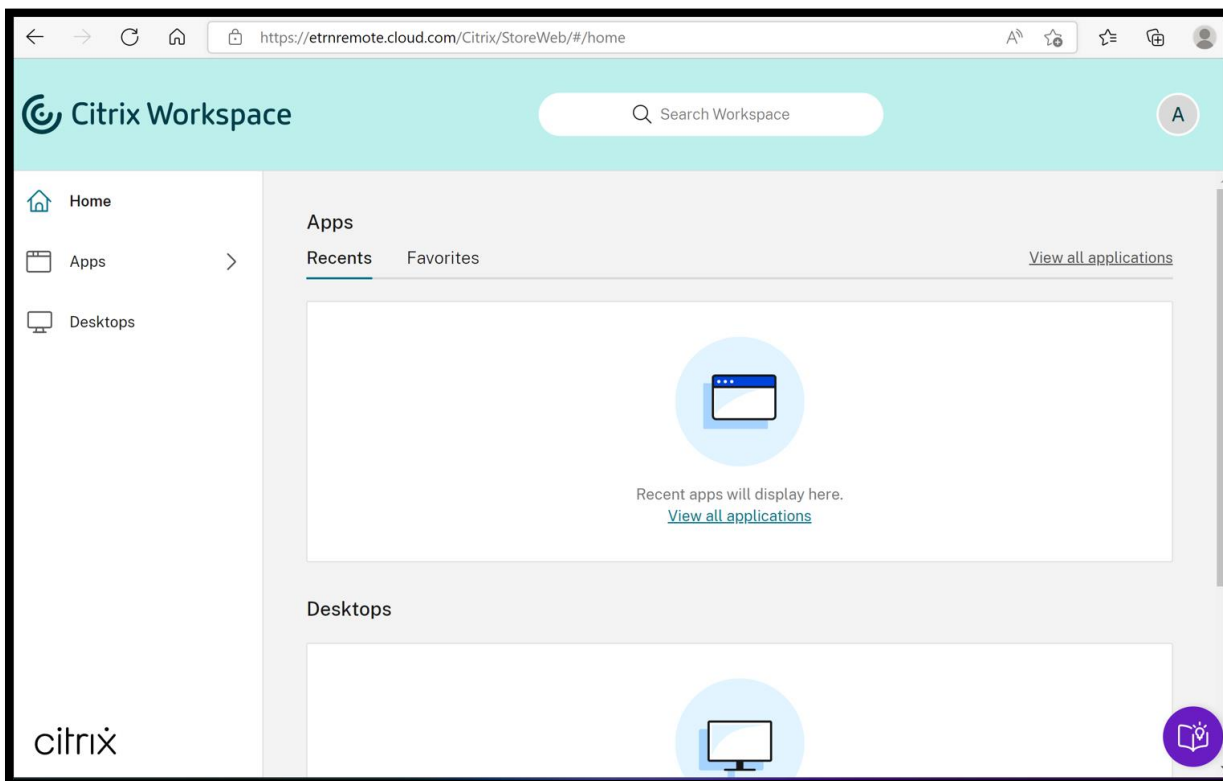


Instructions for Logging into QPTM and TIPS CAW Environments

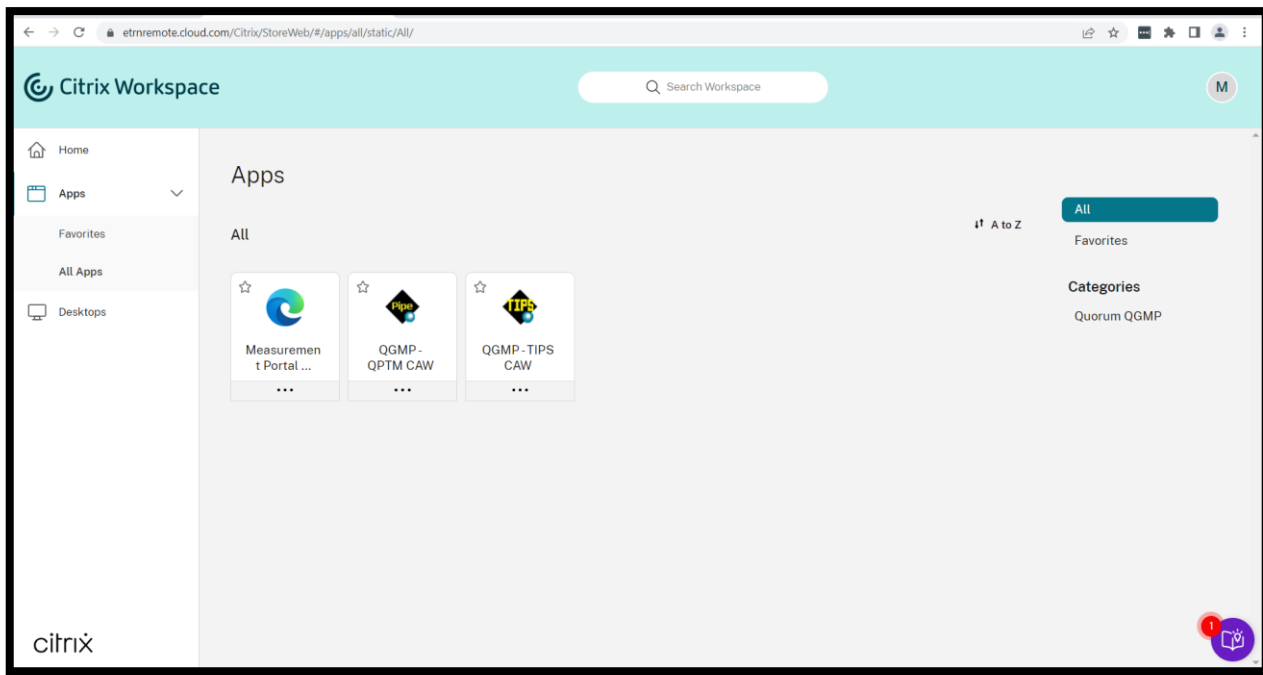
1. Navigate to the Citrix Cloud Workspace URL at <https://etnremote.cloud.com> and log in using your Microsoft user ID (for example, LopezK@equitransmidstream). You will need to authenticate before proceeding.
2. Select “Use web browser”



3. On the next screen, click on “View all applications”:

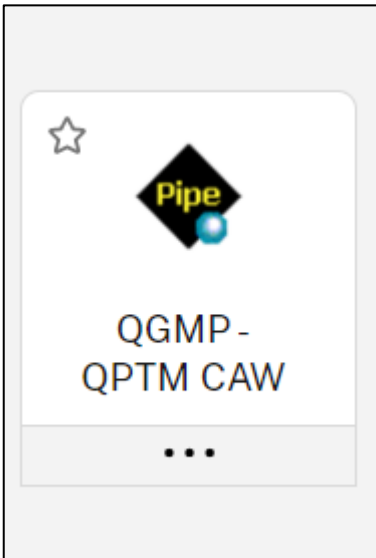


4. The icons to which you have access will display:

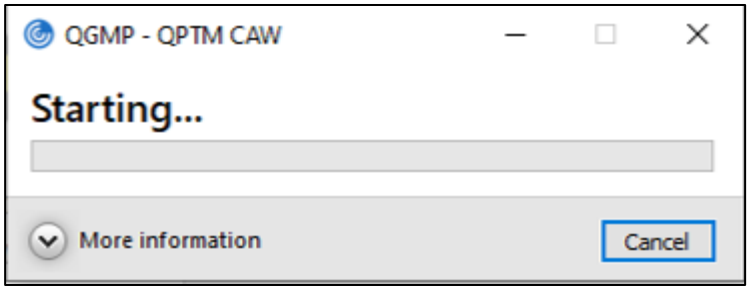


QPTM Login

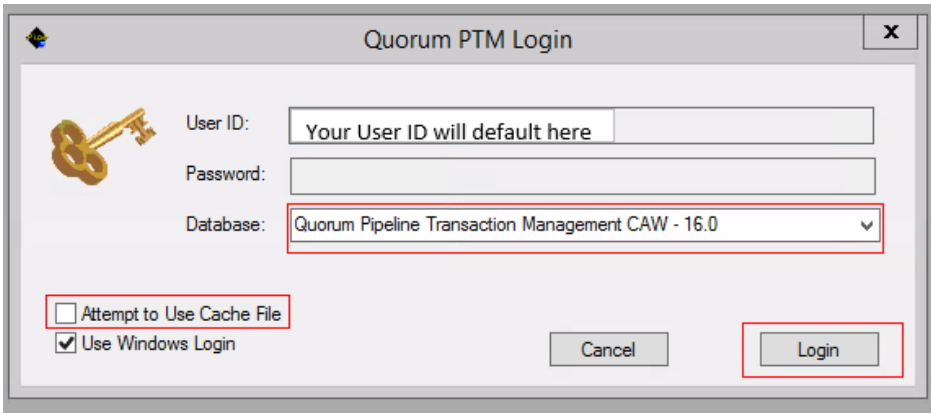
1. Click on the QGMP – QPTM CAW icon



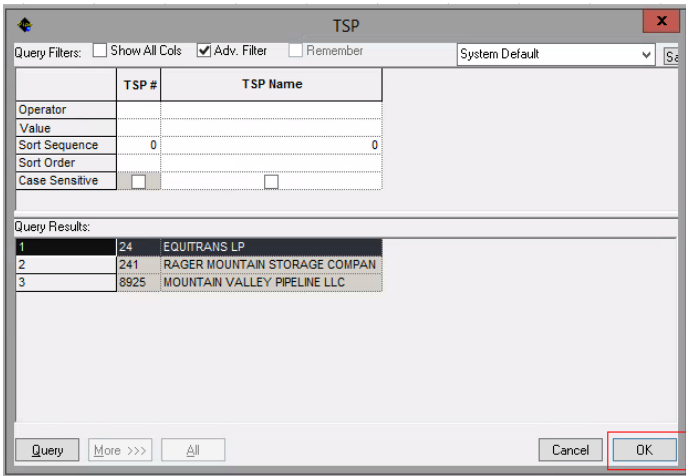
3. This box will temporarily appear, then disappear:



4. Leave your User ID as the default, select the database indicated, uncheck the “Attempt to Use Cache File”, then click on “Login”:

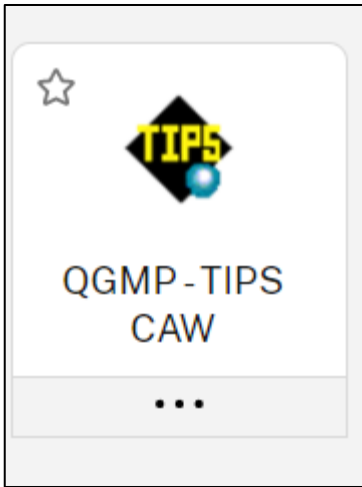


5. Select TSP, then click on “OK”:

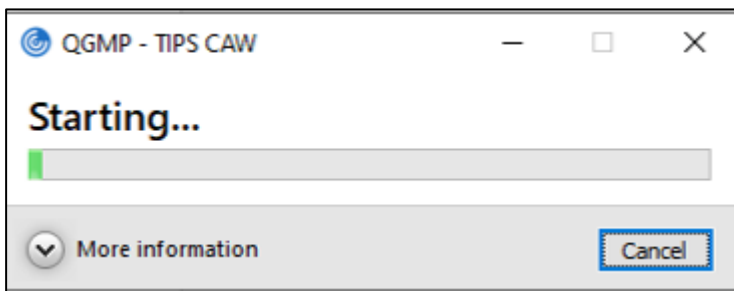


TIPS Login

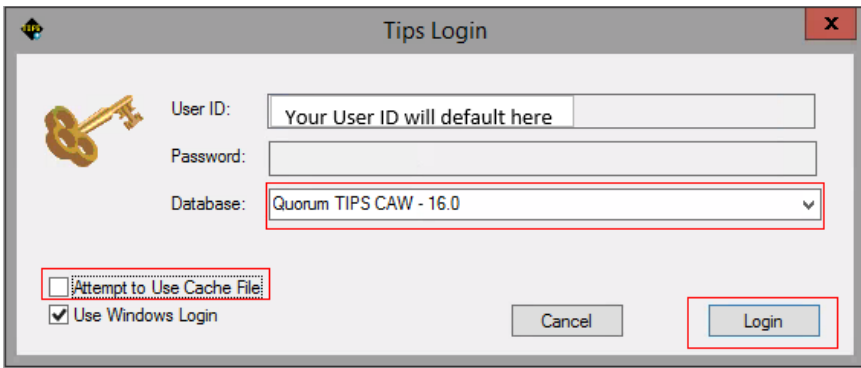
1. Click on the QGMP – TIPS CAW icon



2. This box will temporarily appear, then disappear:



3. Leave your User ID as the default, select the database indicated, uncheck the "Attempt to Use Cache File", then click on "Login":



4. Leave the following selections unchecked, click on "OK":

